

J.S.B. Industries, the makers of Muffin Town, Aesop's Bagels, Smart Choice whole grain foods and Madeline's Gourmet Cookies, purchased an 82,830 SF facility in Lawrence, MA. J.S.B. bakes and freezes a wide variety of baked goods for retailers and food service providers in the US.

The building was purchased and renovated with the intent to increase the company's production capacity and meet corporate growth goals. Producing 8,000 to 10,000 cases of baked goods per day, the facility uses the latest in food production equipment, product safety and sanitization practices.

Space in the freezer was critical to meet J.S.B.'s product output goals. Abel Womack reviewed their proposed design and was able to suggest an alternative that increased the freezer pallet positions from 708 to 732. A 96" beam length allowed more bays per row than the traditional 108" beam. This represented a **5% increase of space in the freezer for finished goods.**

The project consisted of the installation of a double deep rack system for the freezer/cooler in the new facility. The rack system is capable of storing 732 pallets in the freezer (8065 SF) and 24 pallets in the cooler (634 SF). Also, a curtain wall was installed to separate the food manufacturing area from the office areas according to GMP (Good Manufacturing Practices).

Key Benefits:

- **Pallet storage capacity was maximized while minimizing the cost per pallet position in a double deep rack system.**
- The design allowed for better housekeeping in the rack system due to the high bottom beam. The high beam design is preferred by food inspectors.
- Selected uprights were sized to fit under the refrigeration units so short pallets could be placed.



Project Key Features:

Challenge

- Maximize pallet positions stored in the freezer/cooler.

Abel Womack Solution

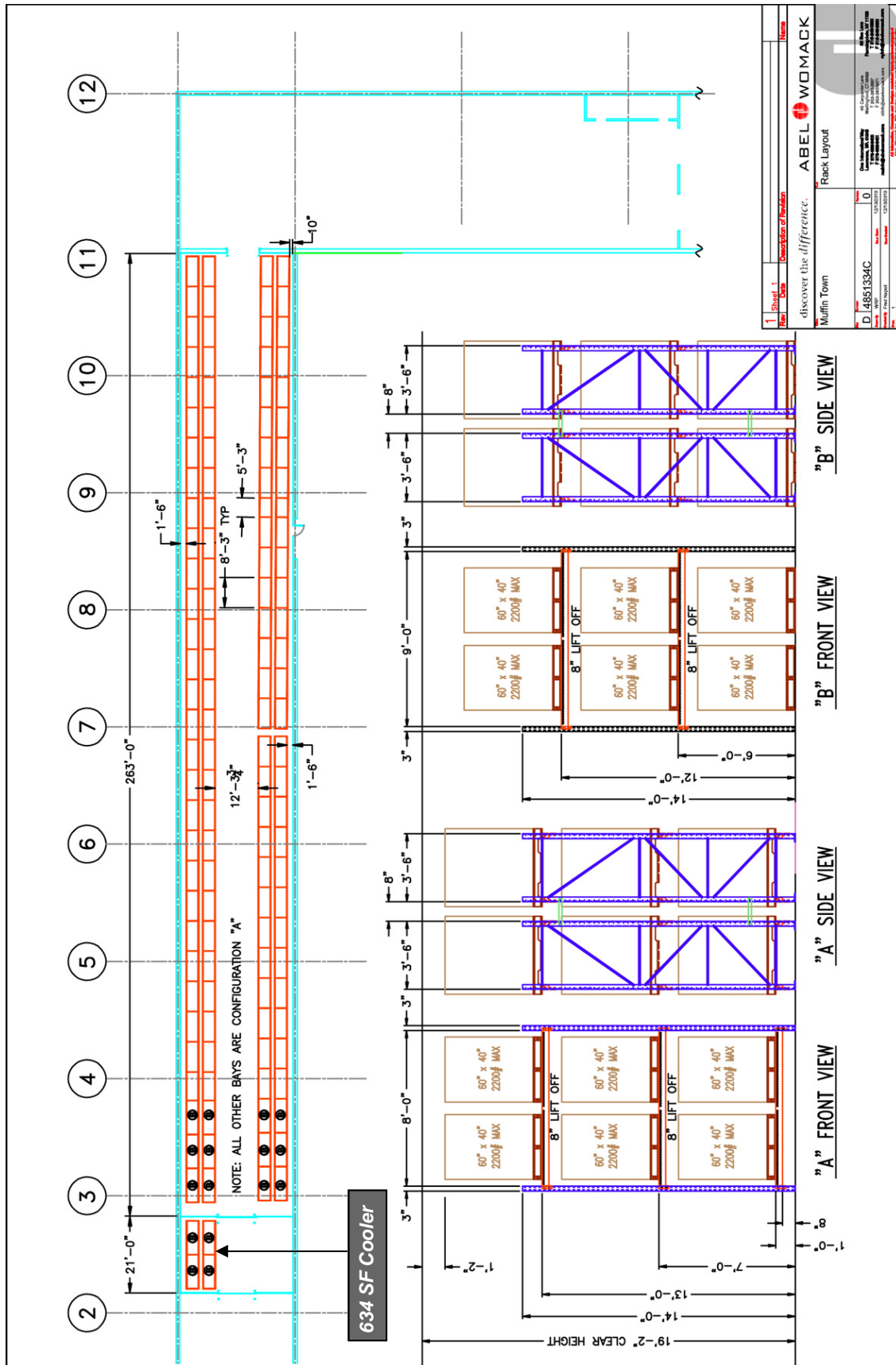
- Design and install a new double deep rack system in the freezer/cooler.

Benefit

- Maximized pallet storage capacity while minimizing cost per pallet position.
- Rack design preferred by food inspectors for better cleanliness.
- Fast track project.



Raymond 7400 deep reach truck was used to accommodate the new freezer rack system.



The number of freezer pallet positions was increased from 708 to 732 with new layout.